

New 1905-08 photos of Chatsworth – Train Depot, General Store and Bannon Quarry

The four photos below are from the Roy Aristarchus Carpenter (1878-1965) collection, and were recently posted on Facebook by his great grandson, Rob Roche.

The Southern Pacific Depot, built in 1893 and burned in 1917.
View northwest.

The tracks traveled west to a turntable between today's Farralone and Shoup.



In 1898, Southern Pacific laid another mile of track into the Bannon quarry, in anticipation of the San Pedro Breakwater contract. For more information, go to chatsworthhistory.com, Digital Archives, Presentations, Chatsworth Railroad History.

We asked Rob what his great-grandfather was doing in Chatsworth? Rob's reply: "*He was a Conductor/Motorman for both the Pacific Electric and the LARy (Los Angeles Railway). He also worked at Terminal Island, Portland Cement and other places. He moved around a lot and took his box camera with him. Why was he in Chatsworth between 1905 and 1928? Who knows, He didn't live there that we know of, but he had wandering feet so that's as good a reason as any I guess.*"

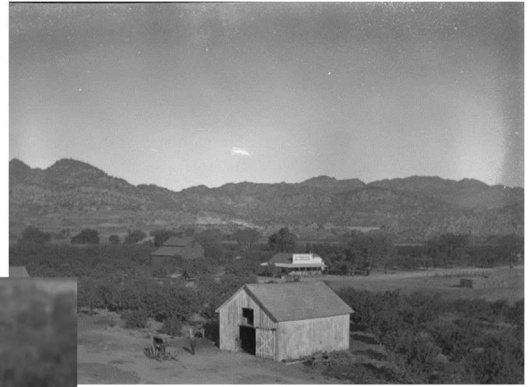
Teams of horses loading hay or alfalfa at the Depot

View north. Stoney Point can be seen in the distance, to the right of the boxcar and left of the man on the empty wagon.



View east probably taken from the 2nd story of the 1890 Chatsworth Hotel - A man stands next to a buggy in front of a barn, probably a part of early Chatsworth transportation to and from the Hotel and Train Depot. Behind the barn is the General Store. Fred Graves and Lovell Hill bought the store in 1906 after the death of Mr. and Mrs. Jackson, the previous owners.

(enlarged crop of photo below)



The barn is just east and a little north of the hotel, and was probably used to store buggies, horses, wagons, etc.

The Bannon/Chatsworth Park Quarry

View looking south from the end of the quarry spur. Steam operated derricks loading railroad cars.

Notice in the enlarged crop below, that the derrick poles are buried in stacked rock foundations.

For more information and photos of the Quarry, go to chatsworthhistory.com, Digital Archives, Presentations, Chatsworth Hills Homesteaders Part 2, pgs. 25-38.

